

New Homes



346 comments

Have your say on our proposals for new homes, including family-sized social homes.

[View details](#)

New Commercial Space and Pocket Park



323 comments

Have your say on our proposals for new retail spaces, a new community park, and children's play area.

[View details](#)

Information: Our Vision and Latest Plans



Information: The Case for a Tall Building



Road



320 comments

Learn more about public realm plans

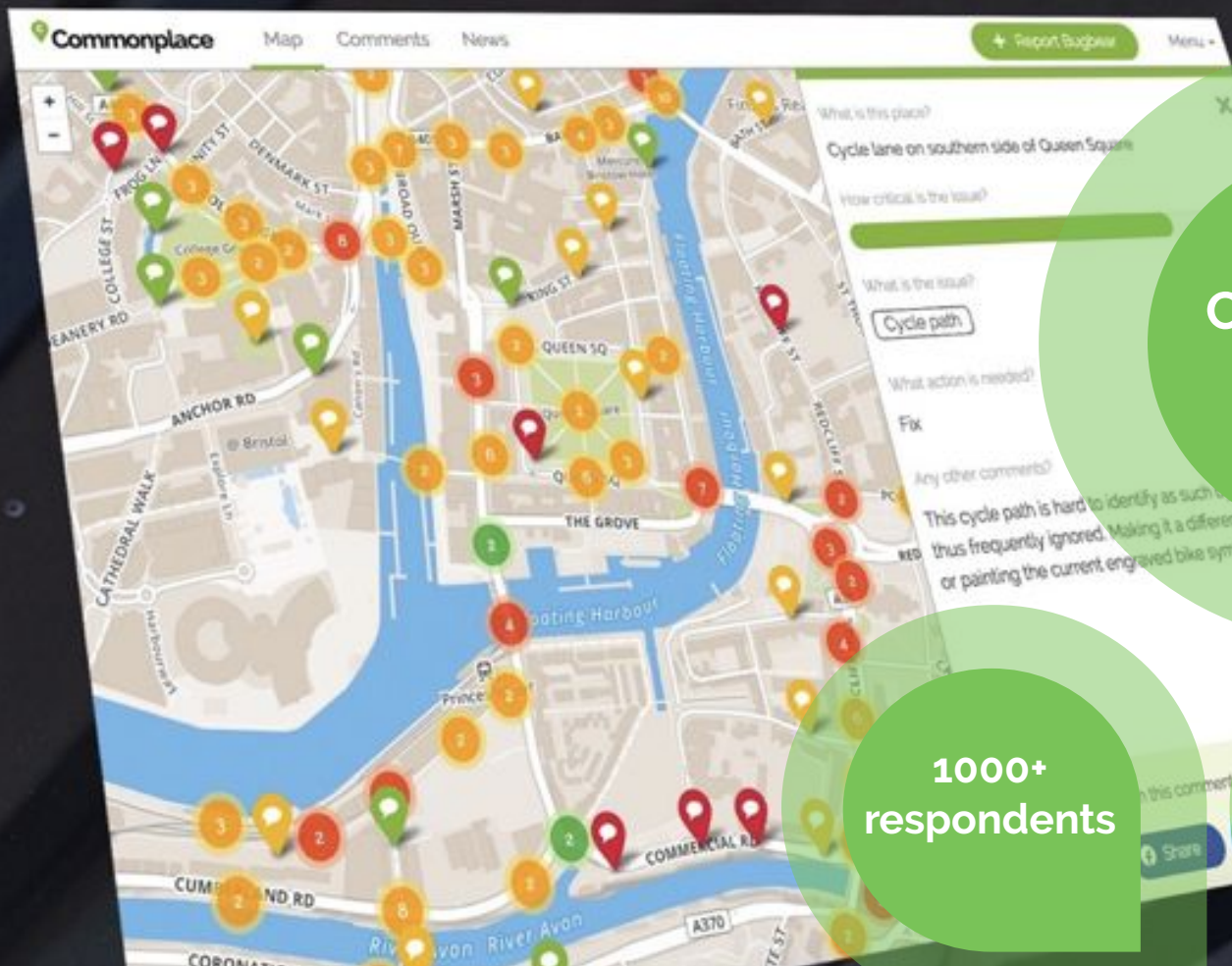
 **Commonplace**

Conversations
to create
better places

130+
Project
partners

1m
People
engaged

300+
Projects



**Community
map**

**1000+
respondents**

**15,000+
contributions**

Mini Holland Waltham Forest



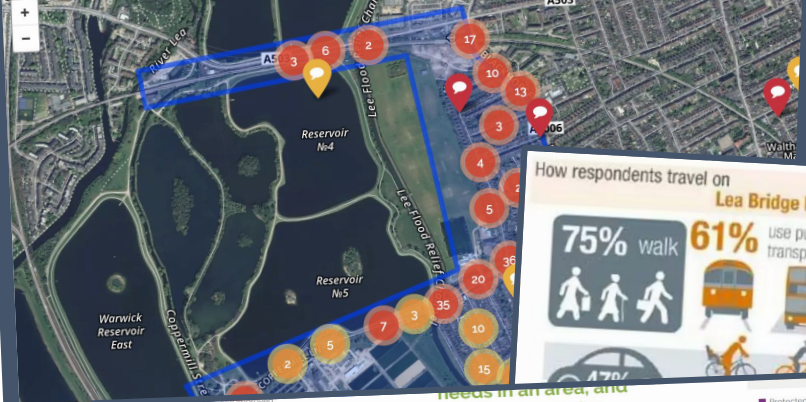


R.I.P. our streets
#E17Streets4All



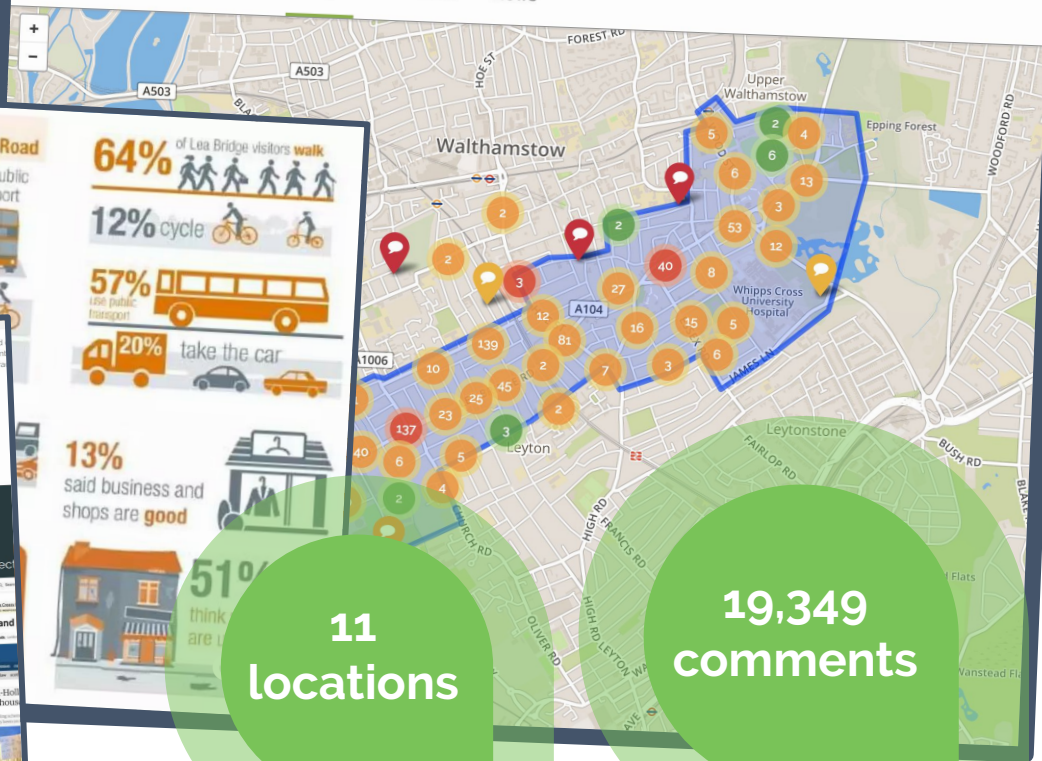
Coppermill

About Map Comments News



Lea Bridge Road

About Map Comments News



How respondents travel on
Lea Bridge Road

75% walk

61% use public transport

64% of Lea Bridge visitors walk

12% cycle

57% use public transport

20% take the car

13% said business and shops are good

51% think are good

needs in an area, and
allows us to make
informed decisions.

Amy Priestley, London Borough of Waltham Forest

72%

Of respondents were either
neutral or supported the proposals

The lobbyist's perspective

STOP Mini Holland

Waltham Forest 'mini-Holland'

politics, protests and housing

How respondents felt about the Mini-Holland proposals on Commonplace

- Positive
- Somewhat-positive
- Neutral
- Somewhat-negative
- Negative

11
locations

19,349
comments



@feeschmidts @cmnplace

Independent studies find people in Waltham Forest are living longer and getting more exercise

2 August 2018



- Children's life expectancy increases by six weeks thanks to Enjoy Waltham Forest's road improvements
- People are becoming more active by walking and cycling for longer after changes to local streets and neighbourhoods
- More than 51,000 households in Waltham Forest are no longer living in areas with dangerously high levels of air pollution compared to a decade ago

Other news

[London Records and Waltham Forest London Borough of Culture 2019 release Christmas classic Stay Another Day in support of CALM\)](#)

[Planning application submitted for council's largest development scheme](#)

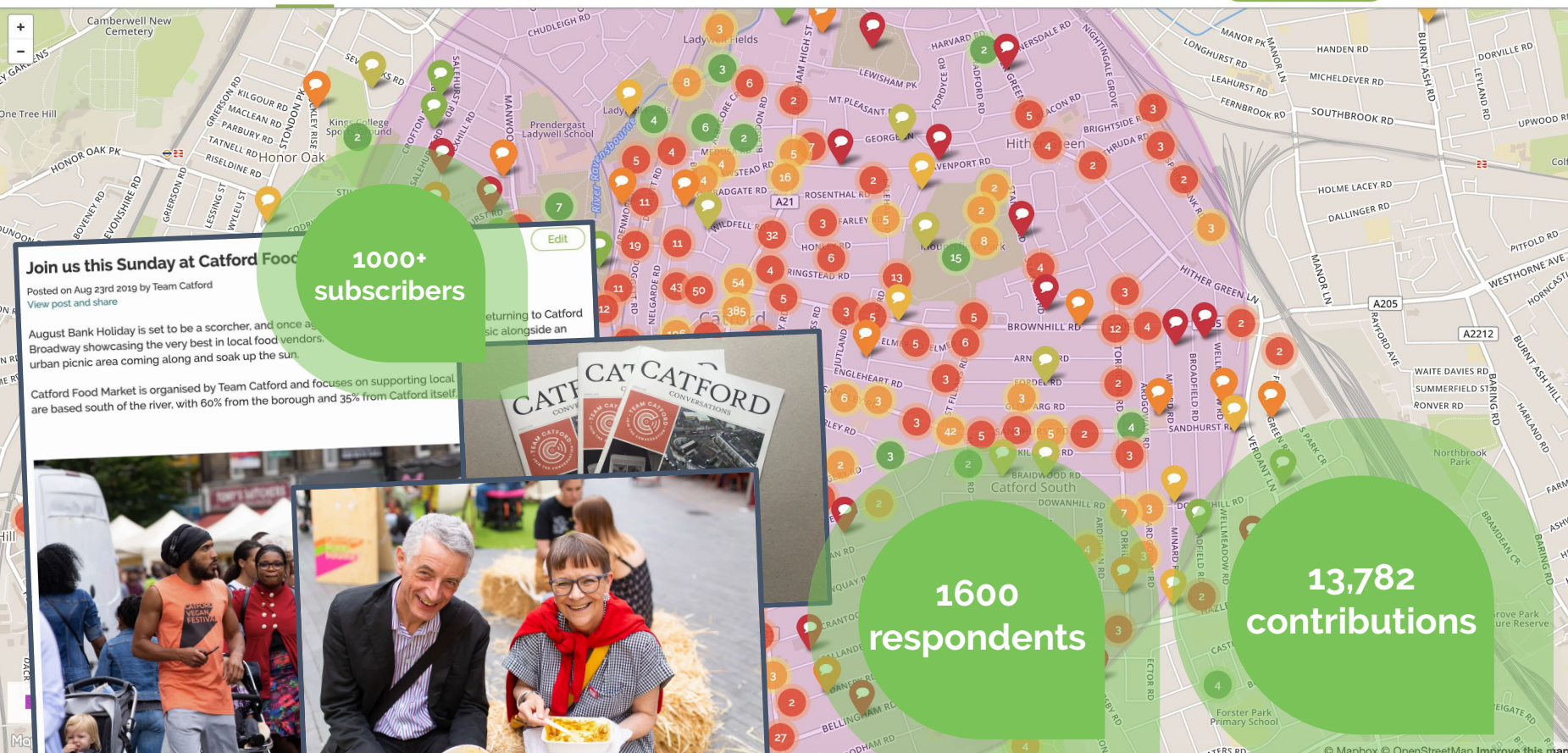
[Technical issues with our public computers at Leyton and Leytonstone Libraries: 28 November 2019](#)

[High Street ADVENTures promises Christmas Family Fun on Small Business Saturday.](#)

[In it to win it](#)

A large, dark-colored sculpture of a cat is mounted on the side of a brick building. The cat is depicted in a pouncing or walking pose, with its head turned towards the left. The building has a dark roof and a window with a white frame is visible on the right. A green circular graphic overlay is positioned on the right side of the image, containing the text 'Catford regeneration'.

Catford regeneration





Future
visualisations

✓ The author of this comment would like to receive a reply. [Reply](#)

What is the place that you have marked on the map?
rows of independent shops around Catford Bridge

Why do you feel this way? (select all that apply)


[Good shopping](#) [Attractive](#) [Sense of community](#) [Vibrant](#)

Do you have any other comments?

There are some good independent shops in this row like the Chinese deli and teh Turkish supermarket. Please can these sort fo places be encouraged and enabled in the planning!

26 people agree with this comment.

[Agree](#) [Share](#) [Share](#)

 26

VU.CITY®



Help shape your
neighbourhood

40+
active projects
in London

Fee Schmidt-Soltau
fee@commonplace.is @feeschmidts
@cmnplace

