



OUR OWN PLACE AND US

#MAPLONDON

9 DECEMBER 2019

MARTINA JUVARA

WWW.URBANSILENCELTD.COM

URBAN
SILENCE



Psalm 103

FOR DISCUSSION TODAY:

1. How permanent is the “place”?
2. Does the “place” influence our opportunities?
(or are we “prisoners of our geography”)?
3. How do we influence our place with our own
life and behaviour?

PUTRAJAYA – Administrative capital of Malaysia

*“...a city that is now reaching
'maturity'...”*



PUTRAJAYA

MALAYSIA

1995 – WHEN I
GOT MARRIED



PUTRAJAYA

MALAYSIA

2001





PUTRAJAYA

MALAYSIA

2005



PUTRAJAYA

MALAYSIA

2011

60K PEOPLE



PUTRAJAYA

MALAYSIA

2018

86K PEOPLE



LONDON 2019



MORE LONDON



LONDON

2001



KINGS CROSS

SPITALFIELDS / BROADGATE

MORE LONDON



LONDON

2005



KINGS CROSS

SPITALFIELDS / BROADGATE

MORE LONDON



LONDON

2011



KINGS CROSS

SPITALFIELDS / BROADGATE



MORE LONDON

LONDON

2018



KINGS CROSS

SPITALFIELDS / BROADGATE

► CITIES / PLACES MAY CHANGE VERY FAST

HOW CAN WE DEFINE AND MAP 'MATURITY'?

- Stability of community ...
- Diverse economy ...
- Secondary development ...
- Cultural life...

HOW CAN WE MONITOR AND CORRECT FAST SHRIVELLING?



DOES THE "PLACE" INFLUENCE OUR OPPORTUNITIES?
(OR ARE WE "PRISONERS OF OUR GEOGRAPHY")?



MILLION DOLLAR BLOCKS

- ▶ Columbia University – Centre for Spatial Research / Justice Mapping Center
- ▶ From focus on crime – to focus on people
- ▶ From people to options

See:

- ▶ <http://c4sr.columbia.edu/projects/million-dollar-blocks>
- ▶ <https://www.moma.org/momaorg/shared/pdfs/docs/learn/courses/MillionDollarBlocks.pdf>
- ▶ <https://www.justicemapping.org/projects>

Laura Kurgan (South African, b. 1961), Eric Cadora (American, b. 1962), David Reinfurt (American, b. 1971), Sarah Williams (American, b. 1974). Spatial Information Design Lab (est. 2004), Graduate School of Architecture, Planning and Preservation, Columbia University (USA, est. 1881). Architecture and Justice from the Million Dollar Blocks project. 2006. ESRI ArcGIS software.

© Laura Kurgan, Spatial Information Design Lab, GSAPP, Columbia University.

MILLION DOLLAR BLOCKS

- ▶ The research also broadened the meaning of 'cost' of imprisonment to include displacement, family separation, etc
- ▶ There are 17 urban blocks in Brooklyn costing more than \$1m / year in direct costs of imprisonment
- ▶ These are the ones where urban form, deprivation and social issues are combined – and public funding for assistance and regeneration constantly deferred
- ▶ A Justice Reinvestment campaign was launched

HOW DO WE INFLUENCE OUR PLACE WITH OUR OWN LIFE AND
BEHAVIOUR?

NICOSIA - CYPRUS

- ▶ Last Divided European capital
- ▶ City crossings opened in 2009

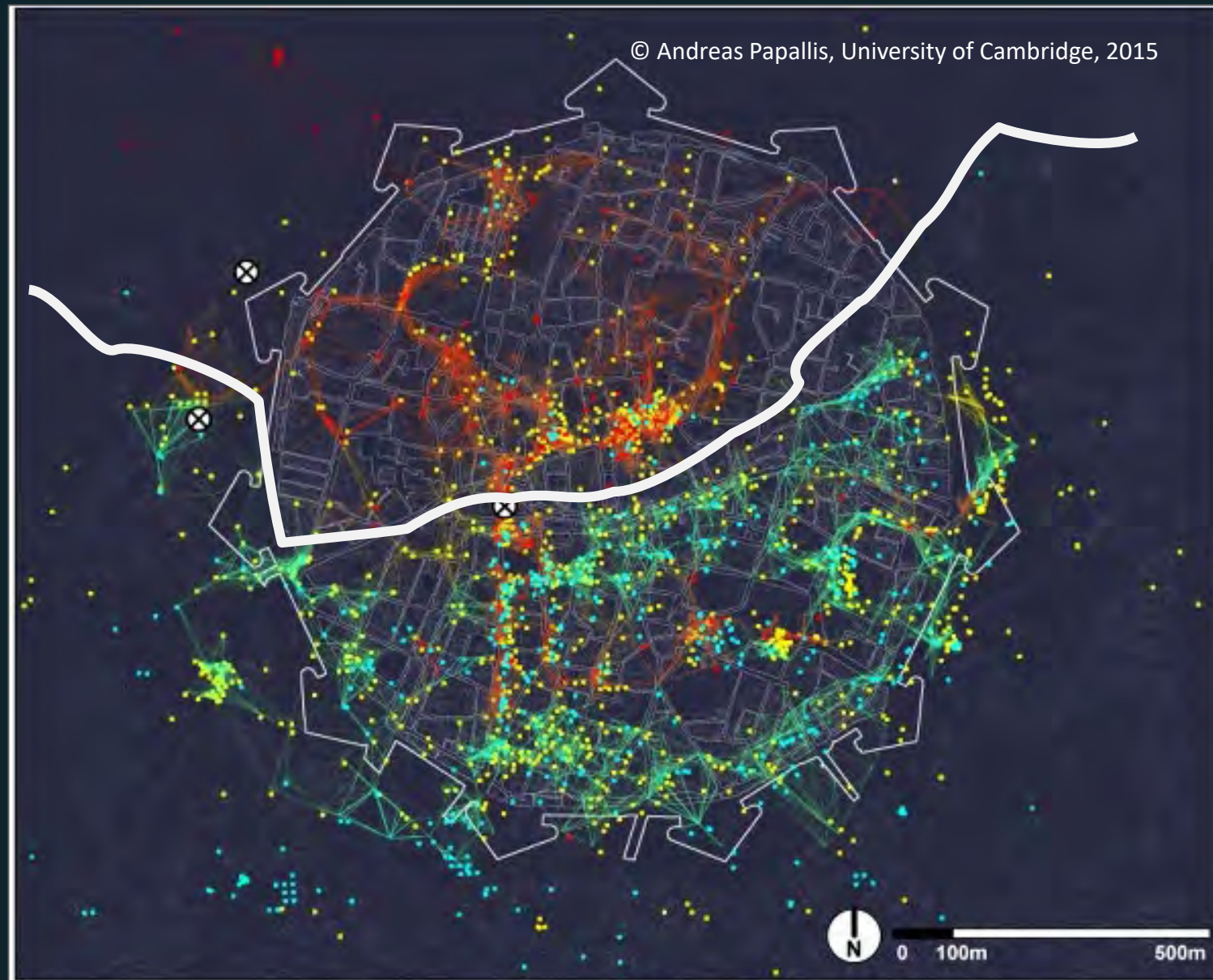


NICOSIA

- ▶ Interactions across communities
- ▶ Active areas
- ▶ At national level – visits from Greek Cypriot community to the northern side:

0.94m in 2015

1.6m in 2018



Nicosia - Walled City, Social Media mapping



Checkpoint



Greek Cypriot activity

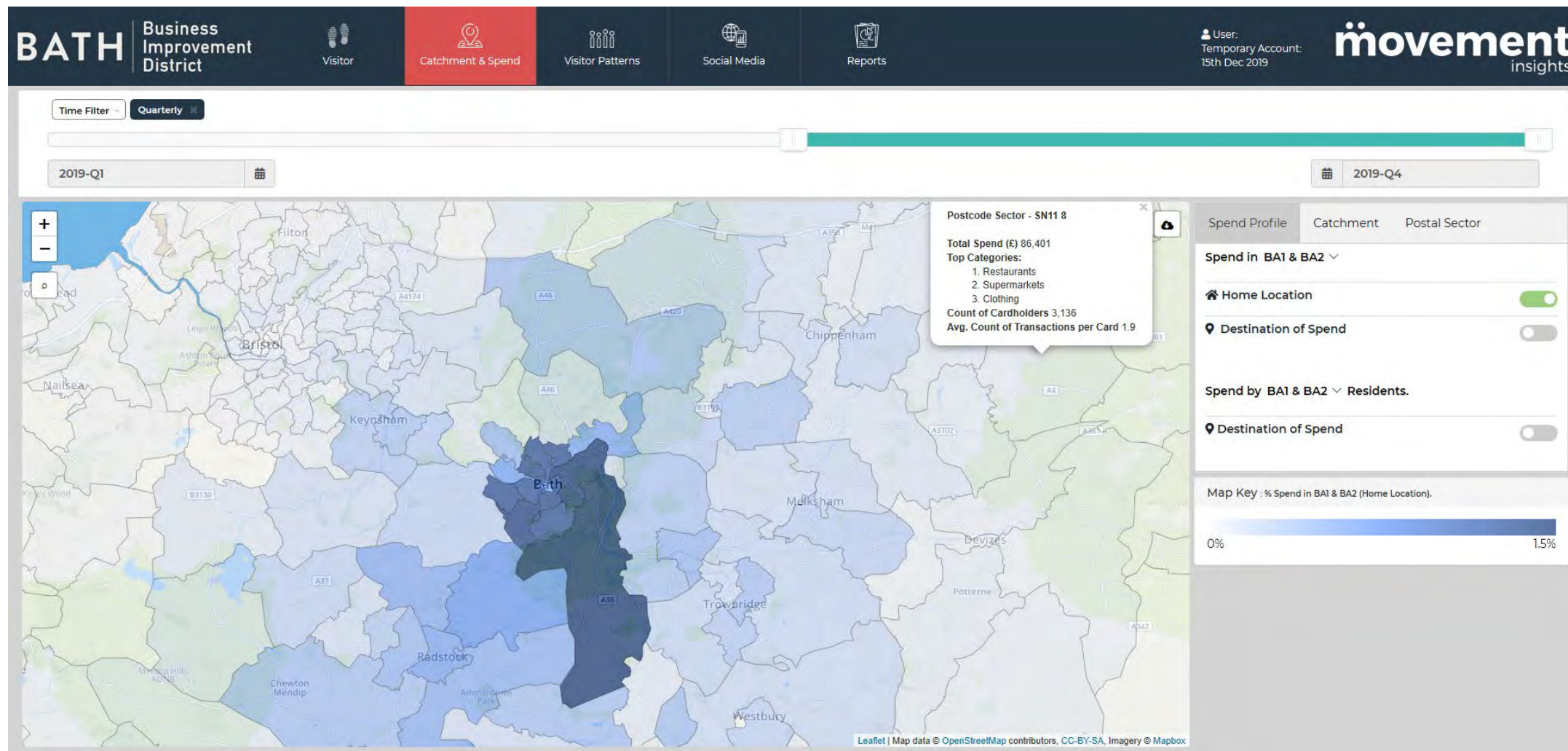


Turkish Cypriot activity

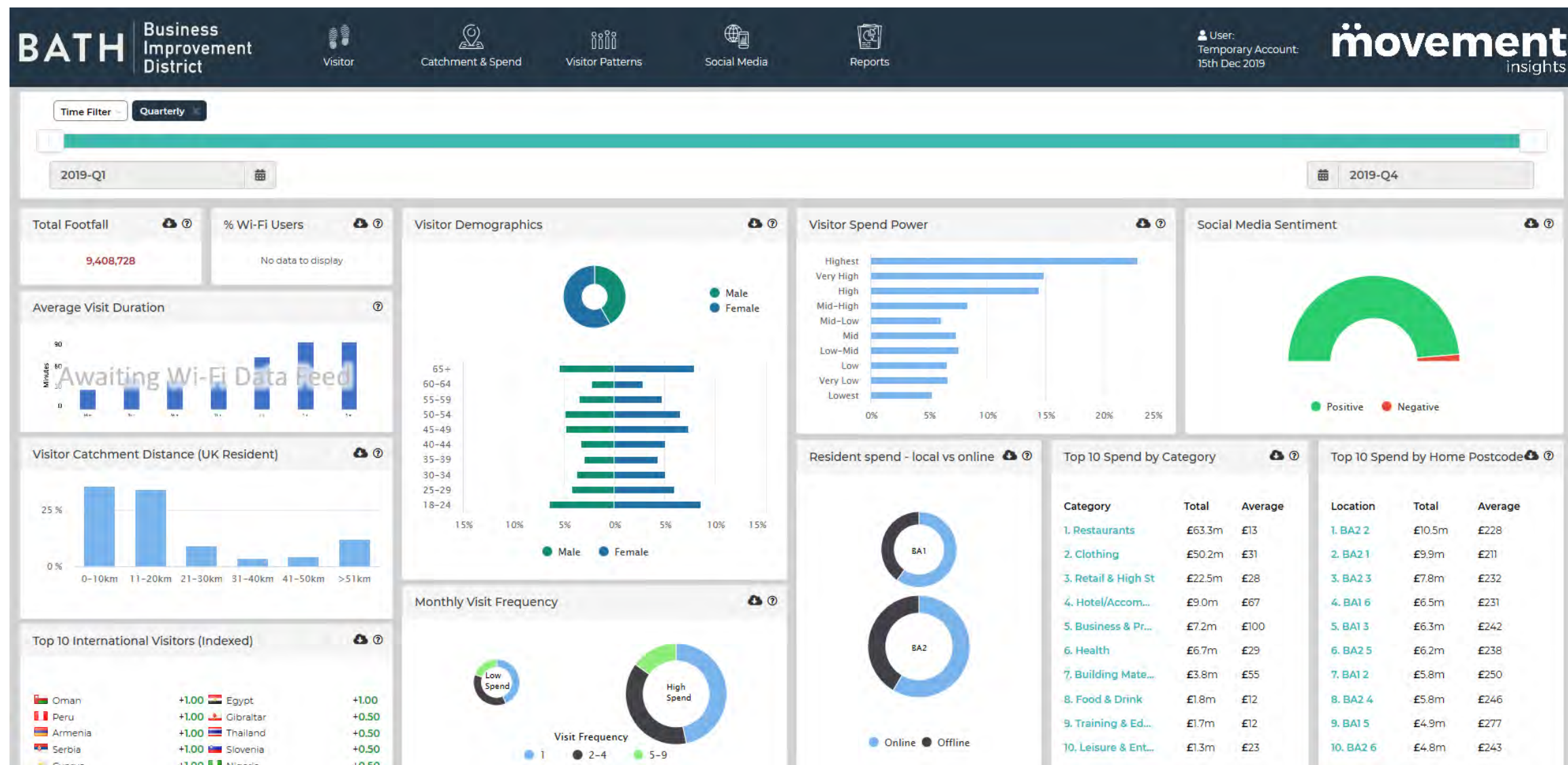


Tourist activity

► BATH BUSINESS IMPROVEMENT DISTRICT – DYNAMIC CATCHMENT



BATH BUSINESS IMPROVEMENT DISTRICT - DASHBOARD





*If we do not understand what
makes us **HUMANS**,
we cannot even start to solve everyday
problems*

Beppe Panza, Art Collector, 1990s



Martina Juvara

86-90 Paul Street

London

EC2A 4NE

T: +44 20 79936575

E: mjuvara@urbansilenceltd.com
